



Modular tape library

StorageTek SL150

Simple and scalable data storage

Oracle's StorageTek SL150 modular tape library is the first scalable tape library designed for growing businesses. Built from Oracle software and StorageTek library technology, it delivers an industry-leading combination of ease of use and scalability.

Ideal for backup and archival applications, the StorageTek SL150 modular tape library saves both time and money, setting the new standard for entry tape automation.



Key features

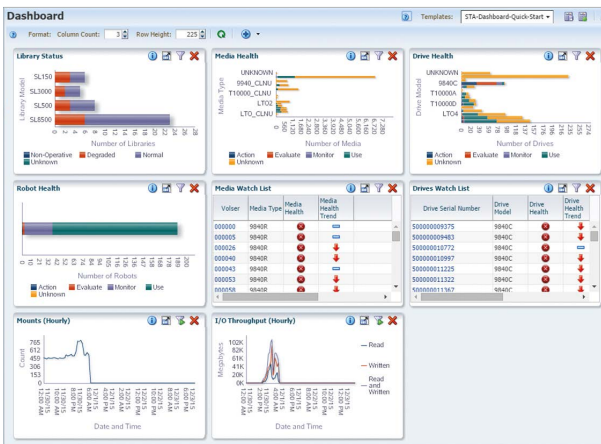
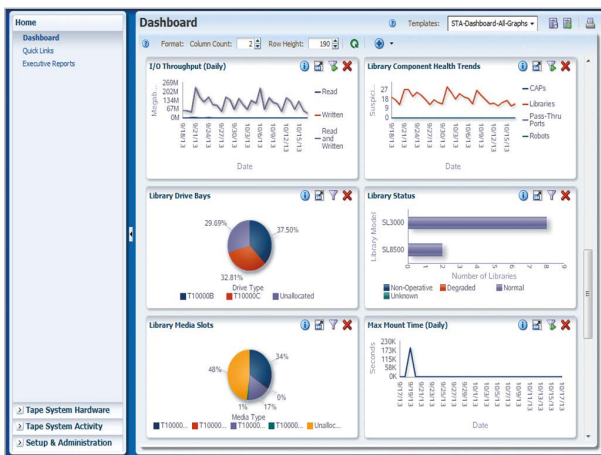
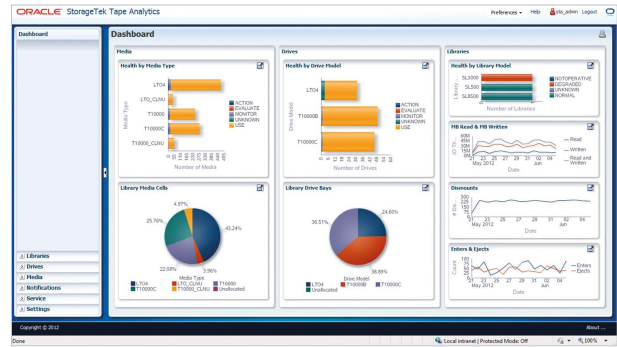
- Remote management capability and an installation wizard ensure swift installation and ease of use
- Scalability from 30 to 450 cartridge slots enables capacity to reach 13 PB, compressed
- Expansion modules offer seamless performance and capacity upgradeability
- Easy consolidation of multiple libraries with up to eight (8) partitions

Key benefits

- Reduce complexity - the tape library is customer installable and upgradable
- Reduce costs with low-cost scalability, reliability, and entrylevel pricing
- Enable consolidation of small tape libraries into one scalable tape library

Make simplicity a priority

The StorageTek SL150 emphasizes simplicity and reduces costs through exceptional scalability, common storage management tools and do-it-yourself installation and upgrades. The easy-to-use remote browser GUI, built from Oracle software, helps streamline library management and allows you to perform library operations, manage library settings, and proactively monitor the library's health.



Scale seamlessly up to 10x more than comparable tape libraries

The StorageTek SL150 modular tape library scales up to 15x, from 30 to 450 slots, without consuming significant time and resources. In addition, it is the only library in the world that autodiscovers new modules via USB.

In the entry to midrange market segment, the StorageTek SL150 modular tape library offers higher density and lower-cost scaling than comparable products. Higher density saves rack space and enables you to store more data in the library. The StorageTek SL150 modular tape library's base

module provides up to 360 TB (with StorageTek LTO8 half-height tape drives) and each expansion module adds an additional 360 TB of capacity as your storage needs grow. With two additional tape drives per expansion module, the StorageTek SL150 also allows for increased performance as

storage needs grow. The StorageTek SL150 supports a heterogeneous drive environment, so you can seamlessly use the drive types and generations that make sense for your access and storage needs – add new LTO generations or drive types



as you scale your library. Choose the drive supplier, generation and interface to support your growing business. The StorageTek SL150 currently supports LTO5, LTO6, LTO7 or LTO8 tape drives.

With the StorageTek SL150, simplicity begins with the library installation and continues throughout the life of the product, even as you expand for data growth.

The library can be initialized in a few steps via the local touchscreen operator panel, and upgrades are easy because they require no tools, complicated cabling, or technical support.

Count your savings

The market-leading scalability of the StorageTek SL150 modular tape library offers an important cost-saving advantage. Competitive systems require you to transition among three separate and distinct products in order to grow from an entry to a midrange library. Oracle launched the first library that can address the full breadth of scale from 30 to 450 slots with a single product.

As a result, the StorageTek SL150 negates the need to rip and replace smaller, individual products as your storage needs grow. In addition, single-product scalability saves media, drives, servicing, power, cooling, and other management costs. Scalability also allows you to do more with less by consolidating multiple libraries into a single product that is far less expensive than replacing libraries over time. For those who want to consolidate multiple libraries or manage distinct sections of the library, the StorageTek SL150 supports one to eight partitions. Native physical partitioning requi-

res no extra hardware or software and provides great flexibility for users.

For more than 40 years, customers have trusted StorageTek reliability and quality. Oracle's StorageTek SL150 leverages technology and design from the award-winning StorageTek SL500 modular library system, and it provides StorageTek reliability at an entry-level price point.

Furthermore, by working with an end-to-end solution provider like Oracle, you can reduce management and service costs.

Maximize performance and availability with Oracle Support

The StorageTek SL150 has a CRU serviceability model—meaning it is customer installable and has customer replaceable spares. However, if you do need installation or service assistance, the following offerings are available from Oracle:

- Oracle **Premier Support** provides the complete system support you need to proactively manage your Oracle storage systems. With swift resolution and rapid-response hardware service when problems do arise, you can keep your business information available 24/7.
- Oracle **Advanced Customer Support** provides mission-critical support from a focused support team, proactive guidance to tailor storage systems for optimal performance and increased competitiveness, and preventative monitoring to help you achieve high availability and optimized system performance.

Specifications

Base Module Only
30 Slots

Medium Configuration
60 Slots

Large Configuration
120 Slots

Performance¹

Throughput per hour, native (uncompressed)	LTO8 - 2.1 TB/h (2 drives 300 MB/s)	LTO8 - 4.1 TB/h (4 drives 300 MB/s)	LTO8 - 8.2 TB/h (8 drives 300 MB/s)
	LTO7 - 2.1 TB/h (2 drives 300MB/s)	LTO7 - 4.1 TB/h (4 drives 300 MB/s)	LTO7 - 8.2 TB/h (8 drives 300 MB/s)

Capacity²

Capacity, native (uncompressed)	LTO8 (12 TB/cartridge) - 360 TB (30 cartridges)	LTO8 (12 TB/cartridge) - 720 TB (60 cartridges)	LTO8 (12 TB/cartridge) - 1.440 TB (120 cartridges)
	LTO7 (6 TB/cartridge) - 180 TB (30 cartridges)	LTO7 (6 TB/cartridge) - 360 TB (60 cartridges)	LTO7 (6 TB/cartridge) - 720 TB (120 cartridges)
Number of cartridges slots	<ul style="list-style-type: none">• 30 – 450 cartridge slots• Base module: 30 slots• Up to 14 expansion modules: 30 slots each modul		
Number of expansion modules	N/A	1 expansion module	3 expansion modules
Number of tape drives/types/suppliers	1 to 30 half-height drives (each module holds up to 2 drives) in any combination of supported drive, including: <ul style="list-style-type: none">• StorageTek LTO 5, 6,7 or 8 half-height tape drives (FC or SAS)		
Mail slot	Base module: 4-cartridge capacity Optional expand mail slot configuration: 19-cartridge capacity		

Availability

Non-disruptive serviceability	Hot-swappable drives; redundant hot swappable power supplies with redundant fans
Mean swaps between failures (MSBF)	2 million robot load/unload cycles

Compatibility

Supported host platforms	Oracle Solaris, UNIX, Windows, Oracle Linux (IPv4, IPv6)
--------------------------	--

Management

Operator panel	User-friendly configuration and diagnostic controls, status display and viewing window
Library management	Remote browser (10/100 Ethernet) or support for Oracle's StorageTek Automated Cartridge System Library Software (StorageTek ACSLS) management software
Auto cleaning support	Configurable auto cleaning support, with no host application or operator action required to clean tape drives
Automatic self-discovery via USB	Self-configuring for cells, drives, and cartridge access ports; hot-swappable drives; redundant hot-swappable power supplies with redundant fans

Mechanical

	Base Module (Minimum Configuration)	Expansion Module (each Module, Modules 2 - 14)
Height	5.15 in., 3U rack space	3.5 in., 2U rack space
Depth	36.42 in.	36.42 in.
Width	18.94 in.	18.94 in.
Weight	47 lb.*	23.1 lb.**

Environmental

Operating Temperature	• +50°F to +104°F, 20%–80% relative humidity, noncondensing
Nonoperating Temperature	• –40°F to +140°F, 10%–95% relative humidity, noncondensing

Power

Voltage	100 VAC–240 VAC at 50 Hz–60 Hz single phase (auto-ranging)
Library (operating max. continuous - not peak)	1.42 A at 120 V or 0.75 A at 240 V, 614 BTU/hr
Drives	Drive power consumption varies (refer to individual drive specifications)

Regulatory Compliance

Elektromagnetic compatibility	FCC (47CFR15 Subpart B) Class A; EN55022 Class A; EN55024; EN61000-3-2; EN61000-3-3; ICES-003 Class A; AS/NZS CISPR22 Class A; VCCI V-3 Class A; KN22 Class A; KN24; CNS13438 Class A
Safety	UL 60950-1, CAN/CSA 22.2 No. 60950-1-07, EN 60950-1, IEC 60950-1, 60825-1, Class 1 Laser Product

¹ Maximum performance, native: LTO 6—1725 TB/hr, LTO7— 32.4 TB/hr, LTO8 – 37.1 TB/hr (30 drives)

² Maximum capacity, native: LTO 6—1.1 PB, LTO7 – 2.7 PB, LTO8 – 5.4 PB (450 cartridges)

*Weight includes library with one drive installed and one power supply

**Weight is expansion only, no drives or power supplies

Base Library

article number	7114334	StorageTek SL150 tape library, 30 slots, 1 LTO 7 FC drive
	7114339	StorageTek SL150 tape library, 30 slots, 1 LTO 7 SAS drive
	7118433	StorageTek SL150 tape library, 30 slots, 1 LTO 8 FC drive
	7118432	StorageTek SL150 tape library, 30 slots, 1 LTO 8 SAS drive

Additional Drives

article number	7114335	LTO 7 FC for StorageTek SL150
	7114338	LTO 7 SAS for StorageTek SL150
	7118437	LTO 8 FC for StorageTek SL150
	7118438	LTO 8 SAS for StorageTek SL150

Expansion Parts

article number	7101763	Expansion Module
	7101769	Power Supply